

**Infopay20/Infopay20Lite V 7.00 Update. Date 31/08/2020**

**Please install this update, for compatibility purposes, even if you are NOT availing of the Employer Wage Subsidy Scheme.**

**This update caters for the EWSS which comes into effect for paydates on or after 01/09/2020**

**Employment Wage Subsidy Scheme.**

These release notes should be read in conjunction with the Revenue Guidelines available at

<https://www.revenue.ie/en/corporate/communications/documents/ewss-guidelines.pdf>

**Press CTRL+Click to open the link or copy and paste in into your browser.**

Please download and read these carefully.

Please note the following:

1. Employers must register online.
2. Employers must have a valid Tax Clearance Certificate in order to register.
3. Employers must have a valid Tax Clearance Certificate in order to get paid. If the TCC is withdrawn between the registration date and the payment date, then the EWSS will not be paid.

Therefore, the first thing all Employers who wish to register should do is ensure they have a valid TCC.

J9 can be no longer used. Any file containing a J9 will be rejected by ROS

**The following changes have been made in Infopay.**

**1. You must confirm that the Employer is registered for EWSS in the Amend Employers Details Screen**

E-mail

Agent TAIN

Submission ID

Request ID

File ID 1,2,3,.....

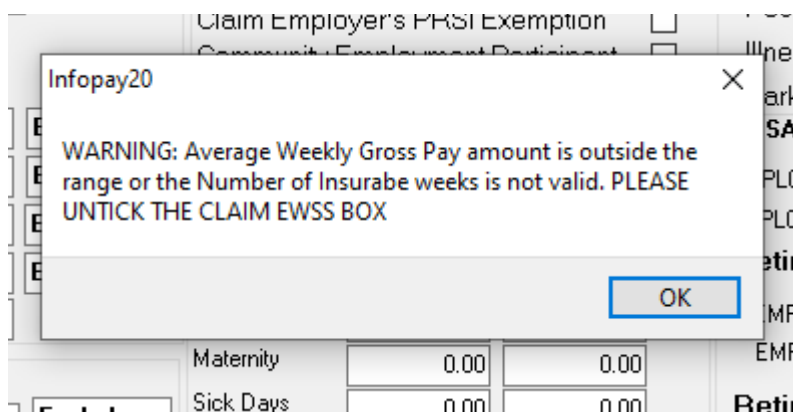
Registered For EWSS

**\* These Fields Must Be**

**2. If your payday is on or after 01/09/2020 you must elect to claim the EWSS for each employee on the Wage Detail Form.**

	% Of Basic	Hours	
Basic Hours		0.00	Exclude ▾
Time +1/2		0.00	Exclude ▾
Double Time		0.00	Exclude ▾
Other Hourly Pay	0.0000	0.00	Exclude ▾
Notional Pay	<b>View/Edit</b>	0.00	
<b>Non Taxable Pay</b>			
		Amount €	
Non Taxable Pay 1		0.00	Exclude ▾
Non Taxable Pay 2		0.00	Exclude ▾
Non Taxable Pay 3		0.00	Exclude ▾
<b>Claim EWSS this period</b>		<input checked="" type="checkbox"/>	

**3. If the employee does not qualify for the EWSS for that period then you will receive a warning.**



**We recommend you redo the wages without claiming. Revenue will still accept the file but will give a warning and won't pay the subsidy.**

**Revenue have also warned that**

“ However, repeated warnings issuing may result in delays in processing the entire payroll run for subsidy purposes pending enquiries, and the possible initiation of penalty proceedings for the provision of false information by the employers concerned.”

**4. This is an interim update to allow employers to claim the subsidy. A further update will issue in the next few days with a facility to report how much the employer can expect to receive in subsidy and Employer PRSI subsidy. A similar report will be available on ROS in due course.**

**IF YOU ARE AN INFOPAY USER**

Please download the latest version from <http://www.infopay.ie/2020/infopay20install.exe> or from the user support section of our website. Password : childspay

**IF YOU ARE AN INFOPAYLITE USER**

Please download the latest version from <http://www.infopay.ie/2020/infopay20liteinstall.exe> or from the user support section of our website. Password : childspay